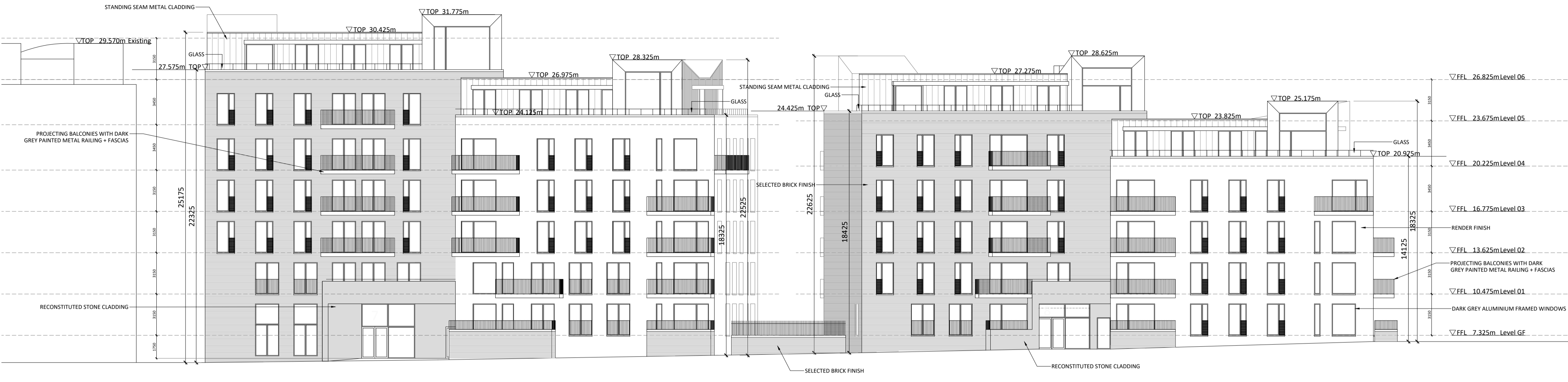


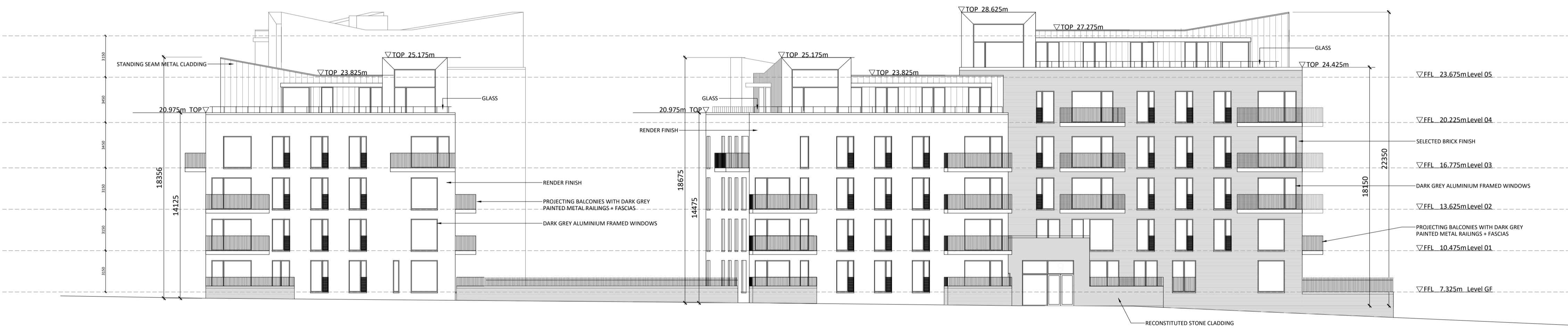
Note:  
Levels are to ordnance survey datum



Block 7 - West Elevation

Block 8 - West Elevation

Blocks 7 & 8  
West Elevation  
Scale 1:200



Block 8 - South Elevation

Block 9 - South Elevation

Blocks 8 & 9  
South Elevation  
Scale 1:200



Block 9 - East Elevation

Blocks 9  
East Elevation  
Scale 1:200

Revision Description	Date	Rev. No.	Issued by
Initial issue for information	08-03-2018	1	CC
Issue for information title update	09-03-2018	2	CC
Issue for pre-planning application to ABP	27-03-2018	3	CC
Fenestration & level changes. East elevation podium detail added. Issued for information.	21-05-2018	4	CC
Issued for planning	26-06-2018	5	CC

Figured dimensions only to be used. This drawing is copyright of O'Mahony Pike Architects Ltd. All information is shared as per approved use in accordance with BS1192(2007) + A2(2016), Table 5; Standard Codes for Suitability of Models and Documents. If 'Information Approval Check' is empty, this information has been shared at 50 - WIP.

**omahony pike** Project No.: 1730 Scale @ A1: 1:200  
 architecture | urban design **Dublin** **Cork**  
 tel: +353 1 202 7400 The Chapel 26 South Mall  
 fax: +353 1 283 0822 Mount St. Anne's Cork City  
 www.omahonypike.com Milltown, Dublin 6 Co. Cork  
 D06 XNS2 Ireland T12 R2RV Ireland

Project Lead: CK Date Printed: 26-06-2018  
 Drawn By: CC Current Rev.: 5  
 Model No.: 1730-OMP-B789-XX-DR-A-XX-20000  
 Purpose: PLANNING

Project: Jacob's Island  
 Location: Jacob's Island, Cork  
 Client: Montip Horizon Ltd.