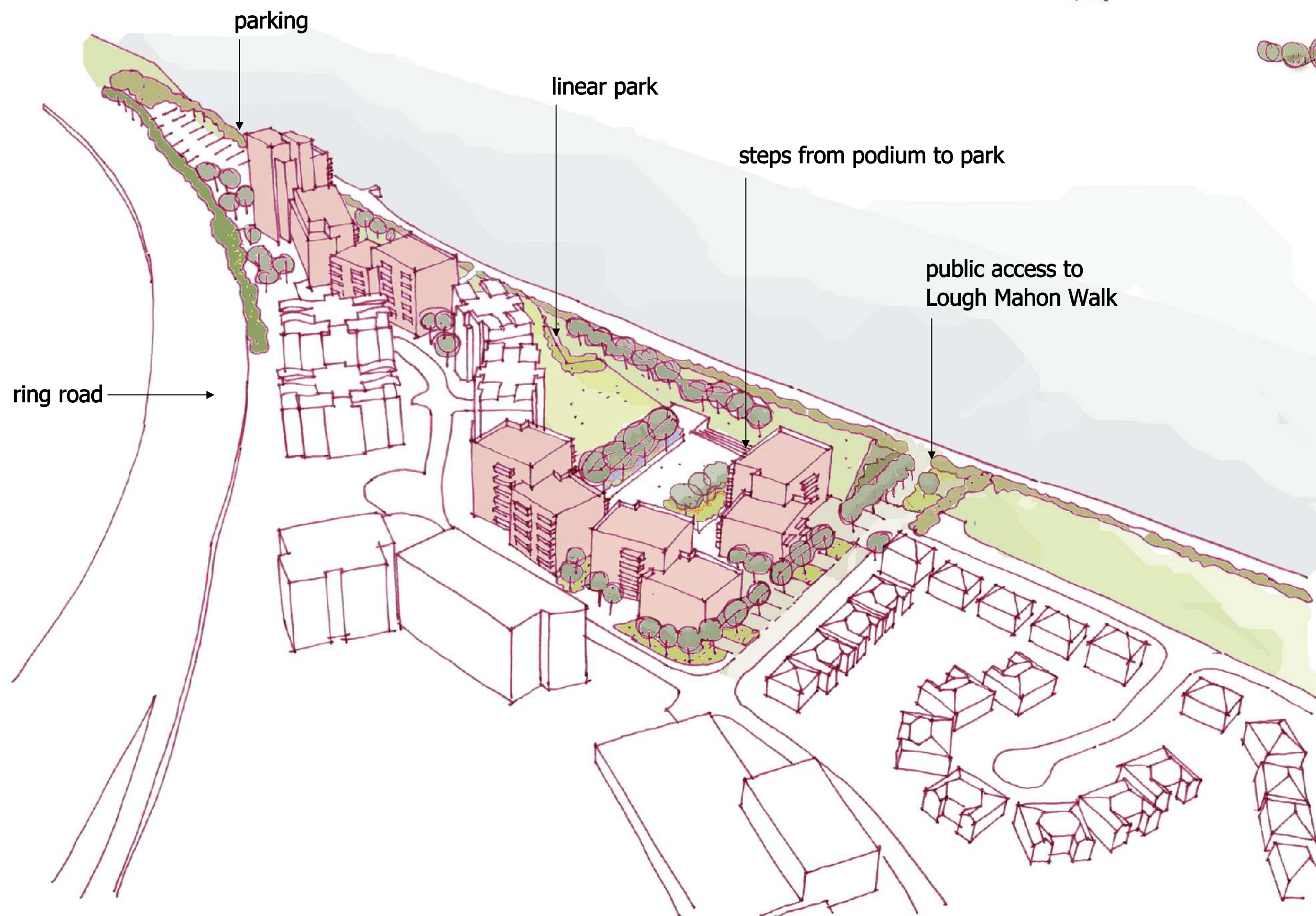
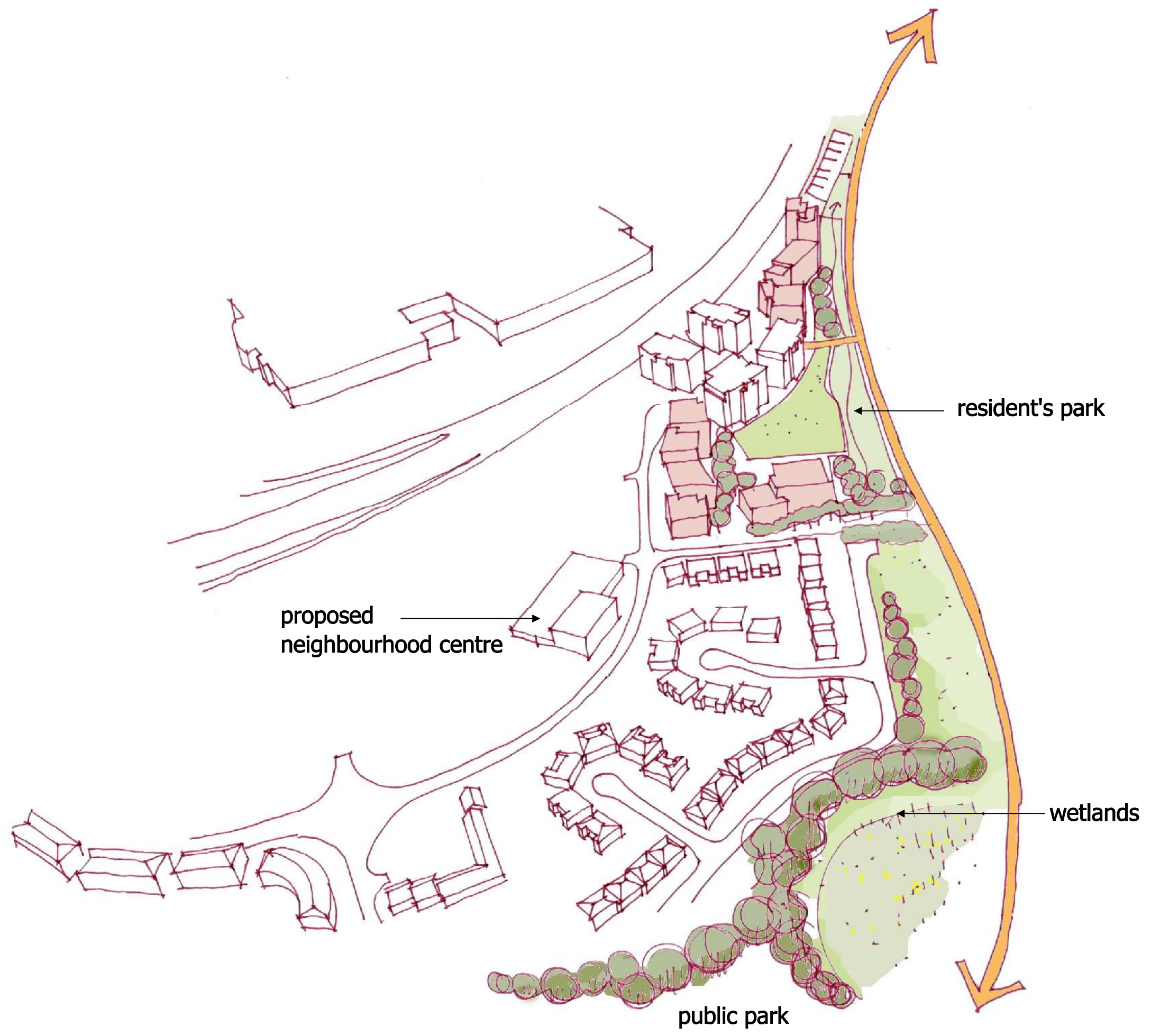
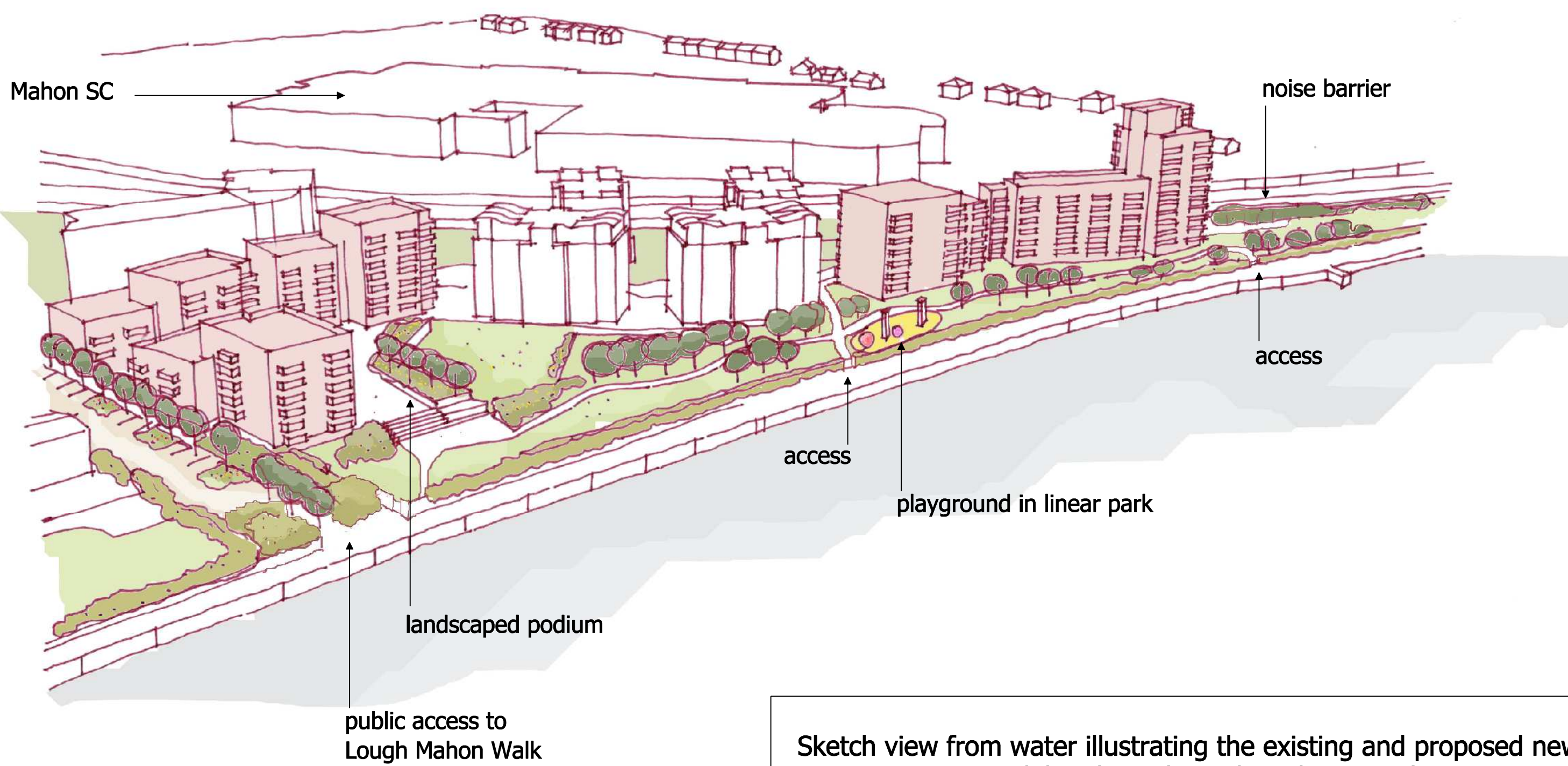


Initial Concept drawing showing building massing, setting within a linear park and connections with Lough Mahon



Sketch view from south west looking toward Lough Mahon



Sketch view from water illustrating the existing and proposed new buildings in a park setting with continuous permeability throughout the scheme and new connections to surrounding amenities.

NOTES / LEGEND

© COPYRIGHT This drawing or design may not be reproduced without permission
 General Notes
 * DO NOT SCALE. USE FIGURED DIMENSIONS ONLY.
 * THIS DRAWING IS TO BE READ IN CONJUNCTION WITH ALL RELEVANT SPECIFICATIONS AND DRAWINGS.
 * ALL DIMENSIONS TO BE CHECKED ON SITE.
 * IN THE EVENT OF ANY DISCREPANCIES BETWEEN DRAWINGS THE CONTRACTOR IS TO INFORM THE ARCHITECT IMMEDIATELY.

Revision	Date	Description	By
1	27.06.2018	Planning Permission Application	IR

Drawing Status:	planning application
Telephone: +353 85 7378900	
e-mail: isa@architecture.com	

ilsa rutgers architecture			
■ ARCHITECTURAL DESIGN ■ LANDSCAPE DESIGN			
Project:	Jacob's Island, Cork		
Drawing:	Concept Sketches		
Date:	February 2018	Drawn by:	IR
Client:	Montip Horizon Ltd.	Scale:	nts
Job No.:	180101	Dwg No.:	2_100
		Rev.:	1